



## Dubbeldam Software

Julianalaan 36  
2628 BH Delft  
The Netherlands  
email: 100554.1102@compuserve.com

## Registration

### SHAREWARE

This program is released as Shareware. After a thirty day trial period, you must register to continue using it. If you register you will receive a registered version of both the 16 bits and 32 bits version of the program, as well as a complete manual.

### ASP

Dubbeldam Software is a member of the Association of Shareware Professionals (ASP). ASP wants to make sure that the shareware principle works for you. If you are unable to resolve a shareware-related problem with an ASP member by contacting the member directly, ASP may be able to help. The ASP Ombudsman can help you resolve a dispute or problem with an ASP member, but does not provide technical support for members' products. Please write to the ASP Ombudsman at 545 Grover Road, Muskegon, MI 49442-9427 USA, FAX 616-788-2765 or send a CompuServe message via CompuServe Mail to ASP Ombudsman 70007,3536.

### DsTUNE AND DsCHORDFINDER

This program is one of set of two related programs, dsTune and dsChordFinder.

**For more information about dsTune click [here](#).**

**For more information about dsChordFinder click [here](#).**

If you have only evaluated one of these programs you can get the other from our WEB site:

**<http://ourworld.compuserve.com/homepages/dubbeldam/>**

or any of the usual shareware sources. The file names are DSTUNE\*. \* and DSCHFI\*. \* for the 16 bits versions and DS32TU\*. \* and DS32CH\*. \* for the 32 bits versions.

### PAYING

The price for registration for one of the programs dsTune and dsChordFinder is \$39 US, shipping and handling included. The price for receiving both programs is \$59 US. If you register you will receive a registered version of both the 16 bits and 32 bits version of the program(s), as well as a complete manual.

#### Paying options :

- Credit card:   By phone       Click [here](#).
- By fax or mail   Click [here](#).
- CompuServe:               Click [here](#).
- Eurocheque:               Click [here](#).
- Other checks:              Click [here](#).
- Cash:                       Click [here](#).

## Phone registrations

Credit card registrations of Dubbeldam Software products can be done at the Public Software Library. PsL will notify us the day of your order and we will ship the product directly to you.

You can order by credit card from PsL by calling:

From North America: 800-2424-PsL  
Elsewhere: 713-524-6394

from 7 a.m.-6 p.m. Mon.-Thurs., 7 a.m.-Noon Friday.

dsTunes item/product # is 14283 (\$39 US).

dsChordFinders item/product # is 14284 (\$39 US).

To order both programs use product #14283 and ask for both Tune and ChordFinder (\$59).

There will be no extra charges for shipping, handling or administrative costs.

The above numbers are for orders only. PsL has no information about the programs.

Any questions about the status of the shipment of the order, refunds, registration options, product details, technical support, volume discounts, dealer pricing, site licenses, etc., must be directed to Dubbeldam Software, Julianalaan 36, 2628 BH Delft, The Netherlands. To insure that you get the latest version, PsL will notify us the day of your order and we will ship the product directly to you.

## Mail/fax credit card registrations

Credit card registrations of Dubbeldam Software products can be done at the Public Software Library. PsL will notify us the day of your order and we will ship the product directly to you.

Please fill out the 'regpsl.frm' registration form, print it out and sign it. You can do that by clicking [here](#),  
Mail or fax it to:

Public Software Library  
P.O.Box 35705  
Houston, TX 77235  
USA  
FAX 713-524-6398

Any questions about the status of the shipment of the order, refunds, registration options, product details, technical support, volume discounts, dealer pricing, site licenses, etc., must be directed to Dubbeldam Software, Julianalaan 36, 2628 BH Delft, The Netherlands. To insure that you get the latest version, PsL will notify us the day of your order and we will ship the product directly to you.

## CompuServe registration

You can register at the shareware registration site on the CompuServe network.

dsTunes registration ID is 8248 (\$39 US).

dsChordFinders registration ID is 8249 (\$39 US).

To register both Tune and ChordFinder use registration ID 8250 (\$59 US).

There will be no extra charges for shipping, handling or administrative costs.

Use GO SWREG to enter the Shareware registration and choose the option Register Shareware. When you have answered all the information the amount will be charged to your CompuServe account.

## Eurocheque registration

The amount on the Eurocheque should be:

dsTune: Hfl. 59.-

dsChordFinder: Hfl. 59.-

Tune&ChordFinder: Hfl. 89.-

These amounts are equivalent to \$39 US and \$59 US. Remember to fill out the number on the back of the Eurocheque.

Please fill out the 'regds frm' registration form, print it out and sign it. You can do that by clicking [here](#), Mail it together with the Eurocheque to:

Before September 1996:

Dubbeldam Software  
Julianalaan 36  
2628 BH Delft  
The Netherlands

From September 1996 on:

Dubbeldam Software  
Jeroen Boschstraat 66  
4532 HN Terneuzen  
The Netherlands

## Other checks registration

To our regret we have to charge an extra \$6 US for registrations by checks other than Eurocheques, due to high collecting costs.

The amount on the check should be:

dsTune: \$ 45.- US or equivalent in any hard currency.

dsChordFinder: \$ 45.- US or equivalent in any hard currency.

Tune&ChordFinder: \$ 65.- US or equivalent in any hard currency.

Please fill out the registration form by clicking [here](#). Print it out and mail it together with the Eurocheque to:

Before September 1996:

Dubbeldam Software  
Julianalaan 36  
2628 BH Delft  
The Netherlands

From September 1996 on:

Dubbeldam Software  
Jeroen Boschstraat 66  
4532 HN Terneuzen  
The Netherlands

## Cash registration

Dutch mail services don't approve of cash being sent through the mail. If you still want to send cash over the mail, please fill out the registration form by clicking [here](#). Print it out and mail it with the money wrapped inside the form to:

Before September 1996:

Dubbeldam Software  
Julianalaan 36  
2628 BH Delft  
The Netherlands

From September 1996 on:

Dubbeldam Software  
Jeroen Boschstraat 66  
4532 HN Terneuzen  
The Netherlands

The amount of money should be:

dsTune: \$ 39.- US  
dsChordFinder: \$ 39.- US  
Tune&ChordFinder: \$ 59.- US

or an equal amount in any main currency.

Dubbeldam Software or Dutch mail services cannot be held responsible for money being lost in the mail.

## dsTune

dsTune v2.1 <ASP> The fast and accurate guitar tuning device for Windows.

Connect your electrical guitar or a microphone for an acoustic guitar to your sound card and see the exact frequency indicated by a needle on a tuning device.

dsTunes accuracy is higher than 0.1 Hz, while its reaction time is 0.2 sec.

The program features: preset and custom tunings, automatic string selection, automatic selection of overtones, volume and signal indication.

The 12/94 issue of Computer!Totaal magazine says about Tune v1.0:  
"It is striking that Tune's indicator is more accurate than my tuning device's!"

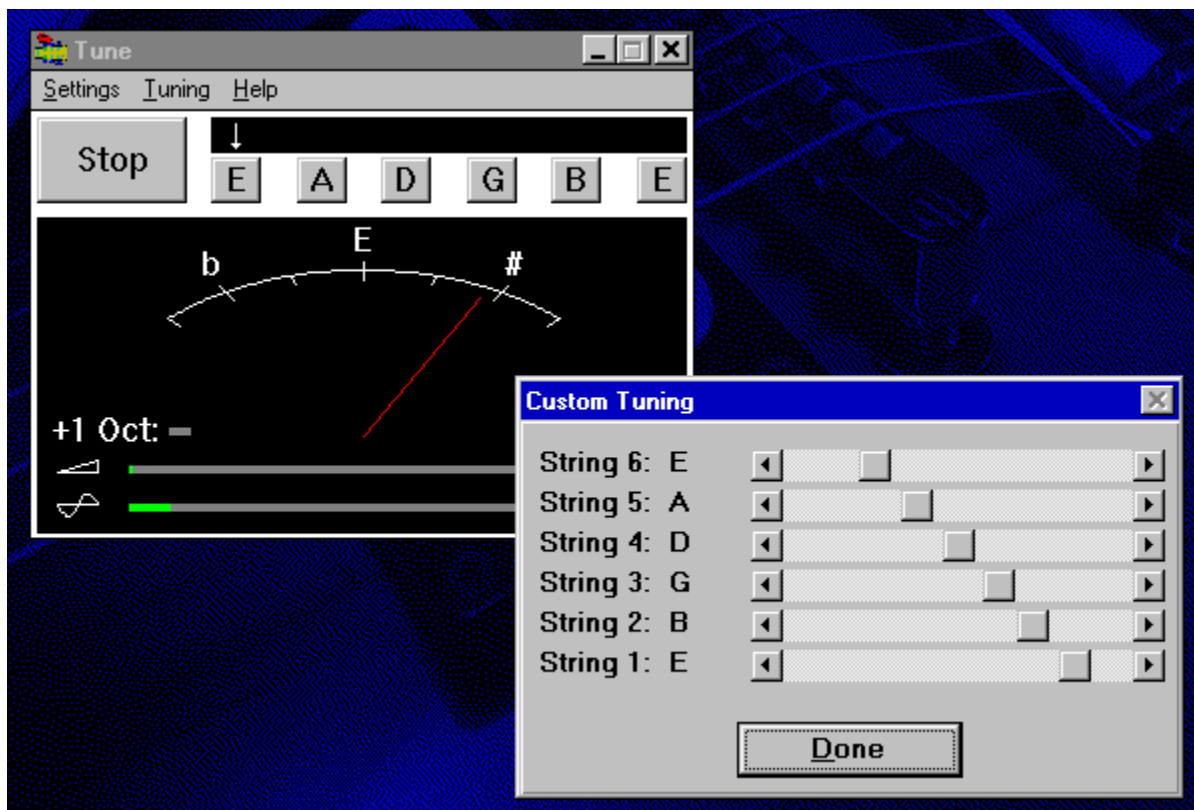
dsTune is distributed as shareware by Dubbeldam Software, member of the Association of Shareware Professionals. Registration costs \$39.00.

An evaluation copy of dsTune can be found at the usual shareware file sources under the names:

DSTUNE\*. \* : 16 bits (Windows 3.1/3.11) version

DS32TU\*. \* : 32 bits (Windows 95) version

This is a screenshot from dsTune:







## dsChordFinder

dsChordFinder v2.1 <ASP>

This Windows program uses frequency analysis to recognize guitar chords in recorded music. Record a song with your sound card, load it in ChordFinder and see which chords are being played.

The 12/94 issue of Computer!Totaal magazine says about ChordFinder v1.0:  
ChordFinder is very fit to aid in finding out guitar chords in songs, as long as they are not too complicated

dsChordFinder is distributed as shareware by Dubbeldam Software, member of the Association of Shareware Professionals. Registration costs \$39.00

An evaluation copy of dsChordFinder can be found at the usual shareware file sources under the names:

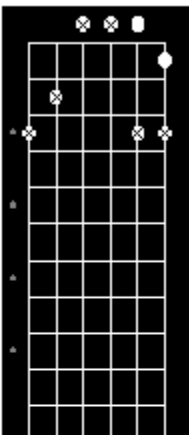
DSCHFI\*. \* : 16 bits (Windows 3.1/3.11) version  
DS32CH\*. \* : 32 bits (Windows 95) version

This is a screenshot from dsChordFinder:

**dsChordFinder** [Window Title Bar]

Open Settings Help [Menu Bar]

-1 0.0 sec +1 [Timeline]



Play \* Stop [Control Buttons]

Practice a-b [Practice Buttons]

Stroke: Offset: Tuning: [Settings Labels]

< -> 0 [Settings Controls]

Detailed description: The dsChordFinder window features a guitar fretboard on the left with a G chord diagram (open strings, 3rd fret on D, 2nd fret on G, 3rd fret on B). The center has a waveform display with a time axis from -1 to +1 second. Below the waveform are buttons for Play, a multiplier (\*), Stop, and navigation arrows. A 'Practice a-b' button and 'a'/'b' markers are also present. At the bottom, there are settings for 'Stroke' (left/right arrows), 'Offset' (a numeric input set to 0), and 'Tuning' (a multi-segment slider).

